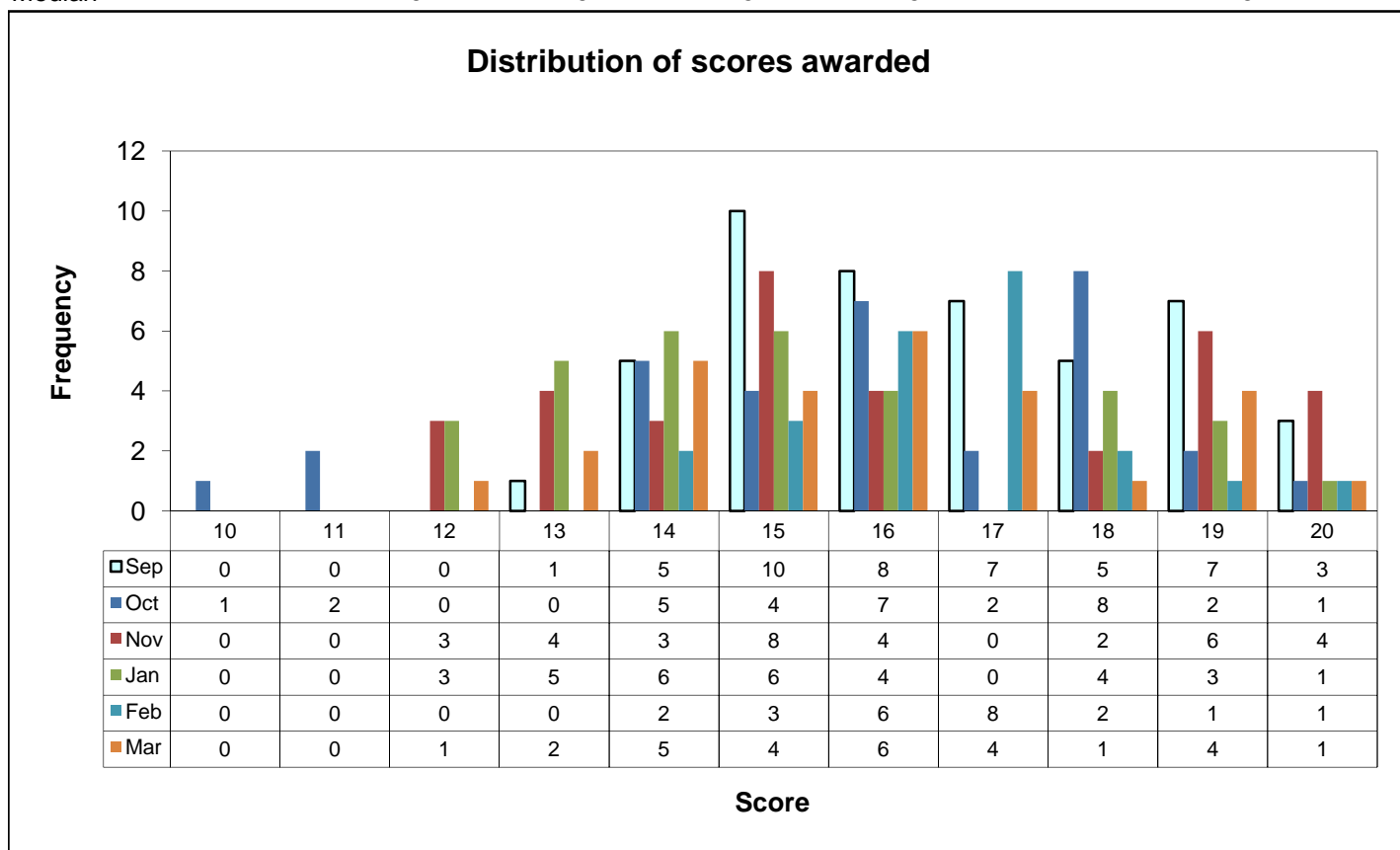


St Ives Photographic Club Monthly Projected Image Competition 2008/09

| | Sep | | Oct | | Nov | | Dec | | Feb | | Mar | | Total |
|------------------|-----------|----|-----------|-----|-----------|-----------|-----------|----|-----------|------|-----|-----------|-------|
| | 1 | 2 | 1 | 2 | 1 | 2 | 1 | 2 | 1 | 2 | 1 | 2 | |
| John Kirkpatrick | 19 | 18 | 18 | 18 | 20 | 20 | 16 | 15 | 18 | 17 | 16 | 20 | 215 |
| Gary Dean | 20 | 17 | 20 | 18 | 14 | 19 | 18 | 14 | 17 | 18 | 18 | 19 | 212 |
| Steve Eeley | 20 | 16 | 18 | 17 | 14 | 18 | 13 | 16 | 20 | 19 | 19 | 17 | 207 |
| Ivan Barrett | 19 | 19 | 16 | 18 | 19 | 15 | 16 | 13 | 15 | 16 | 19 | 19 | 204 |
| Graham Williams | 18 | 15 | 16 | 16 | 19 | 16 | 14 | 13 | 17 | 18.5 | 15 | 16 | 193.5 |
| Gordon Morrison | 17 | 17 | 17* | 17* | 13 | 15 | 15 | 18 | 16 | 16 | 14 | 15 | 190 |
| Peter Hayward | 15 | 14 | 16 | 16 | 13 | 15 | 15 | 19 | 17 | 17 | 13 | 17 | 187 |
| George Dellar | 16 | 14 | 10 | 14 | 14 | 19 | 20 | 14 | 17 | 16 | 16 | 13 | 183 |
| John Clements | 17 | 13 | 18 | 18 | 15 | 13 | 15 | 12 | 16 | 16 | 15 | 14 | 182 |
| Nick Kirk | 18 | 18 | 15 | 15 | 16 | 12 | 16 | 14 | 15 | 15 | 12 | 14 | 180 |
| David Ray | 16 | 16 | 17 | 14 | 15 | 18 | 15 | 12 | | | 17 | 16 | 156 |
| Richard Berridge | 16 | 16 | 16 | 14 | 16 | 13 | 13 | 13 | | | 14 | 16 | 147 |
| Bob Dockrill | 15 | 14 | 15 | 11 | 15 | 15 | | | 17 | 14 | 15 | 16 | 147 |
| Len Brooks | 15 | 14 | | | 16 | 12 | 14 | 14 | 14 | 17 | 17 | 14 | 147 |
| Tom Lane | 16 | 15 | 16 | 11 | 20 | 20 | 18 | 15 | | | | | 131 |
| Ise Berridge | 15 | 15 | 19 | 14 | 15 | 12 | 12 | 19 | | | | | 121 |
| Mike Stephenson | 19 | 15 | 18 | 19 | 19 | 19 | | | | | | | 109 |
| Jonathan Sayer | 19 | 19 | | | | | 19 | 18 | | | | | 75 |
| Kin Khan | 17 | 17 | 15 | 14 | | | | | | | | | 63 |
| Mark Heath | 19 | 18 | | | | | | | | | | | 37 |
| Mark Hunter | 20 | 15 | | | | | | | | | | | 35 |
| Derek Austin | 17 | 16 | | | | | | | | | | | 33 |
| Stan Mace | 15 | 14 | | | | | | | | | | | 29 |

| | | | | | | |
|---------|------|------|------|------|------|------|
| Average | 16.6 | 15.9 | 16.0 | 15.3 | 16.6 | 15.9 |
| Median | 16 | 16 | 15 | 15 | 17 | 16 |



*: Correctly submitted image, omitted in error. Rule 2.10 applies